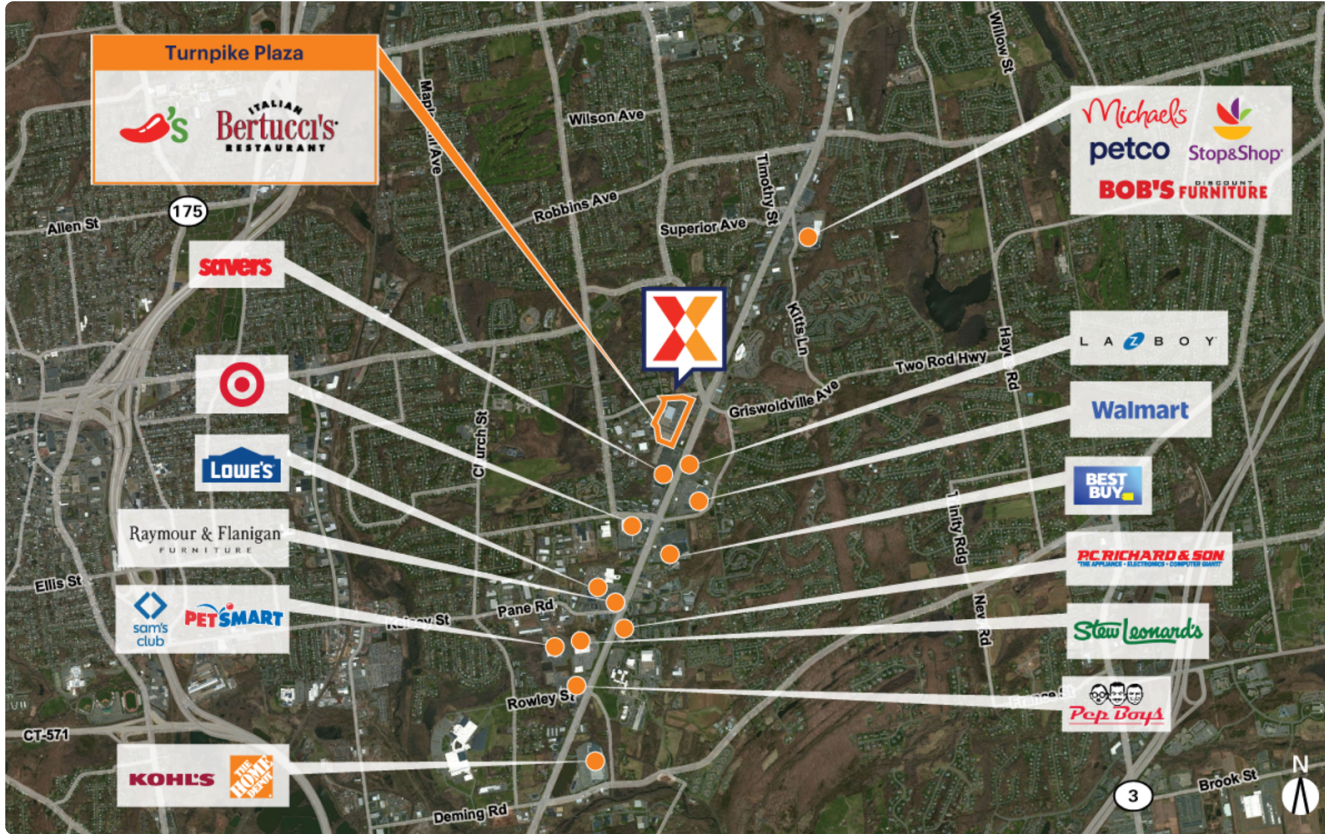


# Turnpike Plaza

2985 Berlin Turnpike | Newington, CT 06111

Capitol Planning Region | Hartford-West Hartford-East Hartford, CT | 149,894 Sq Ft

41.6686, -72.7209



Demographics	1 Mile	3 Miles	5 Miles
Population	8,281	73,172	203,807
Daytime Pop.	7,265	79,257	202,451
Households	3,585	29,100	82,591
Income	\$129,832	\$119,947	\$114,917

Source: Synergos Technologies, Inc. 2024

Price Chopper-anchored center with other national brands including Chili's Grill & Bar, Supercuts & LaserMaxx

High visibility on Berlin Turnpike from 28,000+ vehicles daily (Kalibrate 2025)

Well-educated trade area with 37% college educated persons with a strong daytime population of 79,200+ within a 3-mile radius

Close proximity to Central Connecticut State University & Charter Oak State College with a combined enrollment of 12,200+ students (NCES 2024)



# Turnpike Plaza

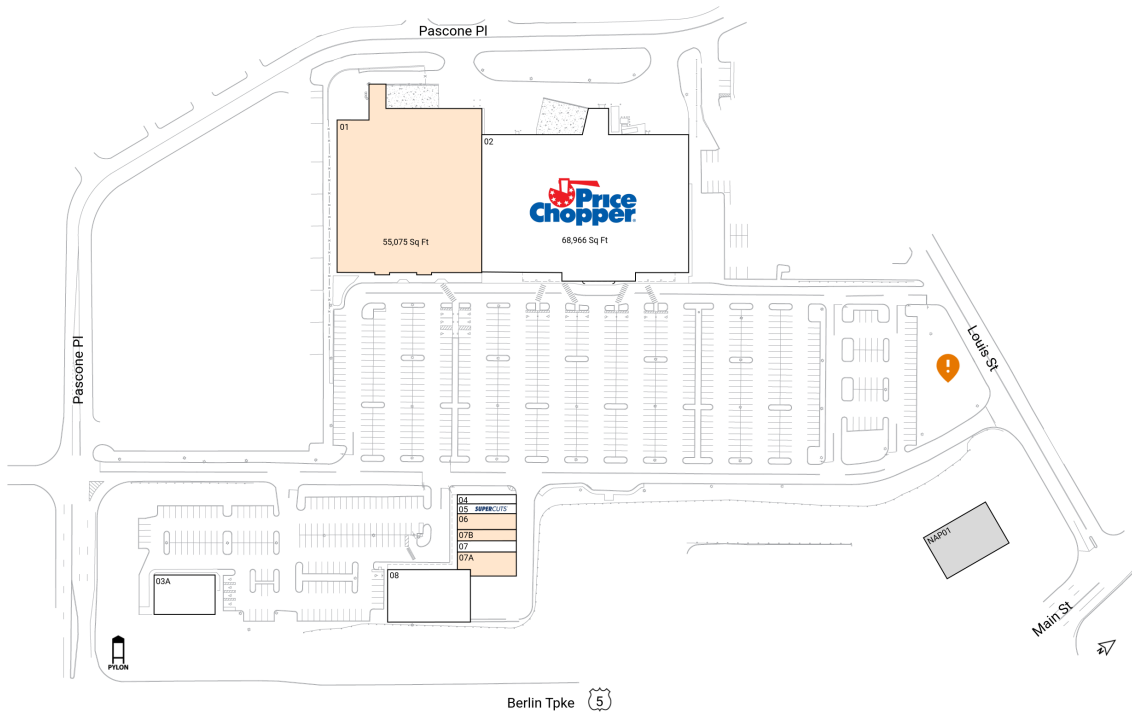
2985 Berlin Turnpike | Newington, CT 06111

Capitol Planning Region

Hartford-West Hartford-East Hartford, CT

149,894 Sq Ft

41.6686, -72.7209



## Available Spaces

01	55,075 Sq Ft	360°	07B	1,542 Sq Ft	360°
06	2,173 Sq Ft	360°	OPO 1	0 Sq Ft	
07A	2,731 Sq Ft				

## Current Tenants Space size listed in square feet

02	Price Chopper	68,966
03A	Pepper Dining	5,653
04	Taro Taro	1,257
05	Supercuts	1,350
07	EnL Nail Bar	1,547
08	LaserMaxx	9,600
NAP01	Casadoro Ristorante & Bar	0

This site plan is for illustrative and information purposes only, showing the general layout of the shopping center; and is not a legal survey. Brixmor makes no representation or warranty that the shopping center is exactly as depicted as site conditions and tenant mix are subject to change over time.  
5146

